

## **Good Shepherd Lutheran Church and Preschool Preschool Expansion Proposal**

**Background:** The Good Shepherd Preschool, with God's blessing, has ministered in the name of Jesus to young children and their families since 1986. God has blessed our preschool ministry through economic downturns and a pandemic. God graciously continues to bless our ministry with children ages 2-6.

In 2018-2019, the congregation went through the Missional Pathway program. The Missional Pathway process provided Good Shepherd Lutheran Church and Preschool (GSLCP) with the opportunity to Assess our congregational strengths and our community needs. Through this process, our Missional Leadership Team crafted a Community Impact Statement for the purpose of guiding Good Shepherd to impact our community with the love and Good News of Jesus Christ.

From the impact statement came four focus areas:

- Provide needed community services on campus
- Partner with organizations to provide needed community services on campus
- Minister to people in the community
- Attract people to worship on campus.

These four focus areas were approved by the congregation in the Fall 2019 Voters Meeting. They continue to guide our ministry life together.

In the community needs assessment, it was recognized that there was a definite need for infant/toddler care. The Covid Pandemic of 2020 has only amplified this need. The question of how Good Shepherd might address this need was brought forward: What would it take for Good Shepherd to add Infant/Toddler care to our preschool ministry?

The Voters Assembly on November 12, 2023 approved the following:

GSLCP resolves to explore creating a new facility for the purpose of Infant and Toddler Care by developing a preliminary design and cost estimate. This preliminary design and cost estimate is to be brought to the Voters Assembly for further approval to proceed and create a new facility.

Subsequently, the services of DMHA Architecture + Design, Hartigan/Foley General Building Contractors, and SEPPS Land Use Consulting were contracted to determine (1) What an expansion of our current preschool campus would look like, (2) Would the City of Goleta be favorable to this project, and (3) What would it cost? This information packet will answer those questions.

**Concept and Cost:** The PS Expansion Committee visited a variety of facilities that currently care for infants/toddlers. From these visits and consultation with DMHA, the following preliminary design options were developed:

- Option A—Complete Project: New Infant Care Building, Remodel Existing Building, New Parking and Road, and Playground

Option A envisions

- Option B—New Infant Care Building, New Parking & Playground
- Option C1—Remodel Existing Building with New Parking & Playground
- Option C2—Remodel Existing Building Only, No New Parking, Playground or Road

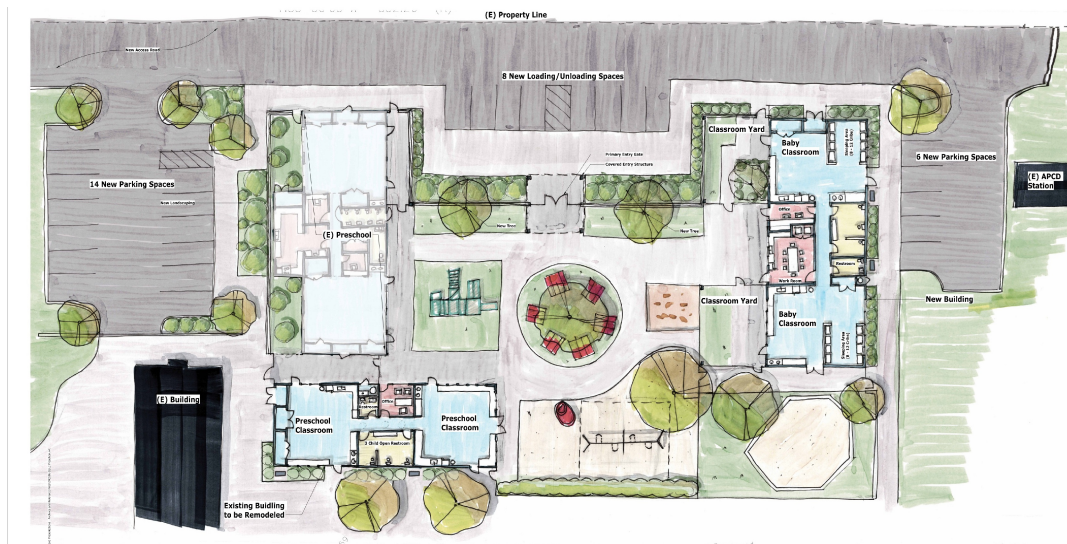
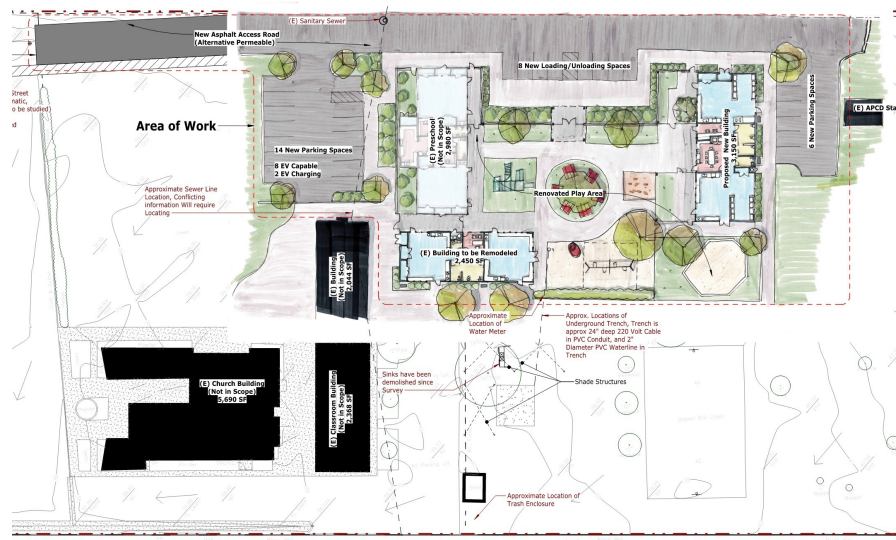
**Note:** Each option includes costs associated with Design and Engineering, Technical Reports, Planner, City/County Fees, Legal and Insurance, and Construction. They are best estimates *today*. It is reasonable to expect a 6% escalation annually for construction costs. This preliminary cost breakdown should be used as a resource in rough costing and to help determine if the project is feasible at this preliminary time and should not be used as a hard number proposal to the project.

### **City of Goleta and Preschool Expansion**

An initial meeting with the City of Goleta indicated the City would be favorable to the project.

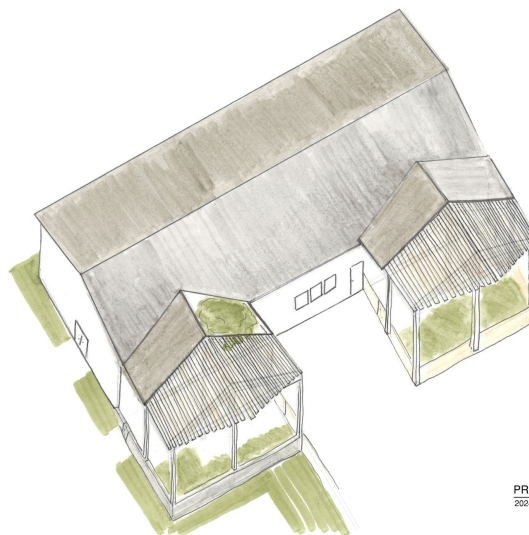
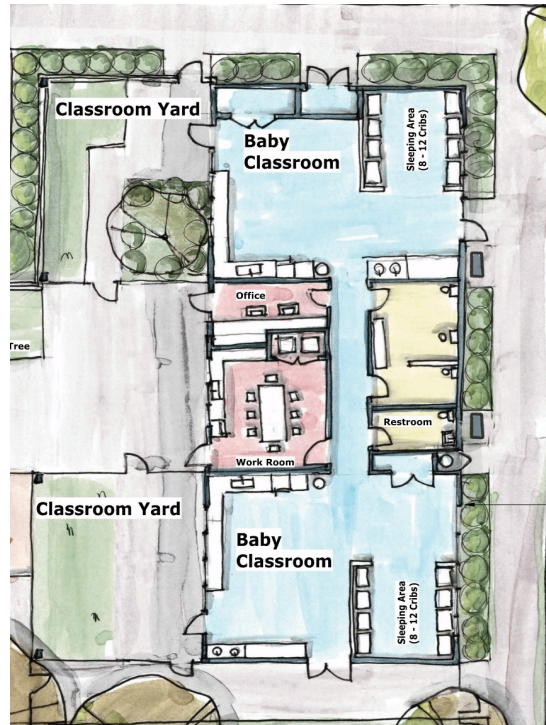
## Option A — Complete Project: New Infant Care Building, Remodel Existing Building, New Parking and Road, and Playground

This option envisions a complete expansion of our preschool campus to include Infant/Toddler care and additional preschool classes. Option A reorients the preschool entrance to the north (mountainside) of the campus. It includes construction of new 3,150 SF building for infant care classroom with associated playground area. Site work will include new access road, parking and loading spaces along with new entry structure. The project also includes the remodel of an existing 2,450 SF preschool classroom building, an access road and parking. Total Build Duration: 14 months. Cost: \$5,917,892.83.



## Option B — New Infant Care Building, New Parking & Playground

Option B reorients the preschool entrance to the north (mountainside) of the campus. It includes construction of new 3,150 SF building for infant care classroom with associated playground area. Site work will include new access road, parking and loading spaces along with new entry structure. Total Build Duration: 12 months. Cost: \$4,409,627.84.



PROPOSED BUILDING AXON  
2024-12-26  
3/32" = 1'-0"

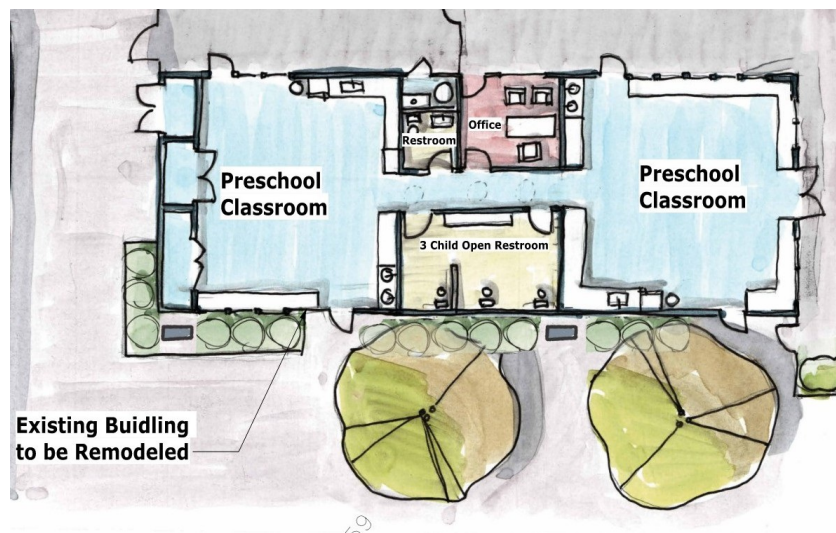
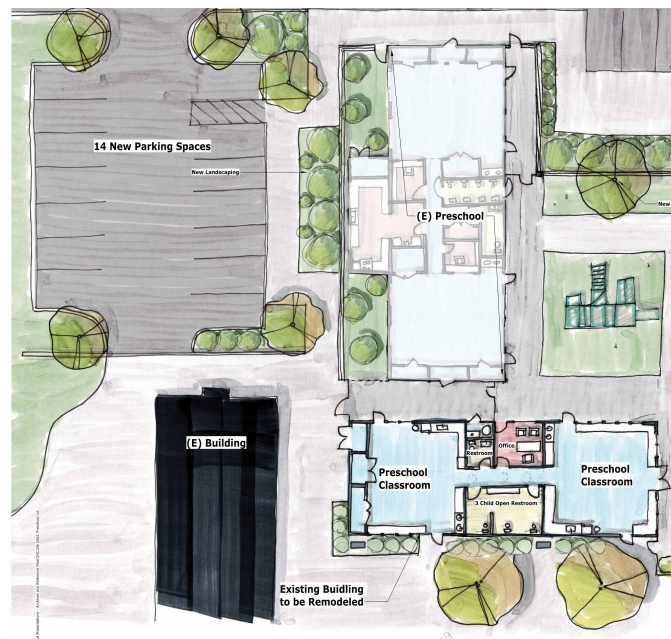


## Option C1 — Remodel Existing Building with New Parking & Playground

Option C1 includes an access road and new parking close to the existing preschool building and west entrance. The entrance to the preschool would remain as it is now. The remodeled building would accommodate the infant/toddler care. Total Build Duration: 8 months. Cost: \$3,037,549.41

## Option C2 — Remodel Existing Building Only, No New Parking, Playground or Road

Option C2 only remodels the existing building for infant/toddler care. Preschool entrance remains as it is now. Total Build Duration: 8 months. Cost: \$2,036,807.94



## How does Good Shepherd Pay for the Preschool expansion?

- Donations
- Loans
- Grants

## Operational Questions

- California State License Requirements
- Staffing Requirements
- Class Size Requirements
- Tuition

## Next Steps

1. **Please attend** one of the information meetings. If you are unable to attend, speak with one of the committee members: Katie Eckert, Don Swann, or Pastor Keith.
2. **Please Pray.** Ask God for His will and guidance as you consider the proposal.
3. **Please indicate** your support or non-support of the proposal.
4. **Please note:** In order to go forward, the proposal will go before the Voters of Good Shepherd for approval. The proposal will ***not*** go to the Voters unless there is an ***overwhelming majority*** of all GSLC members who are committed to supporting the project.

Preschool Expansion Committee  
Preschool Director Katie Eckert  
Don Swann  
Pastor Keith Jones